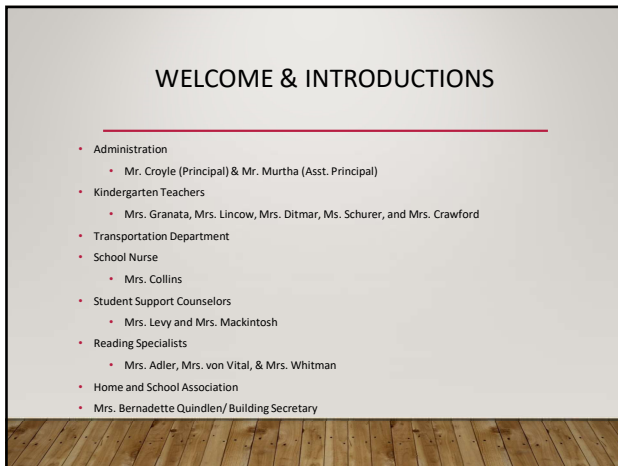
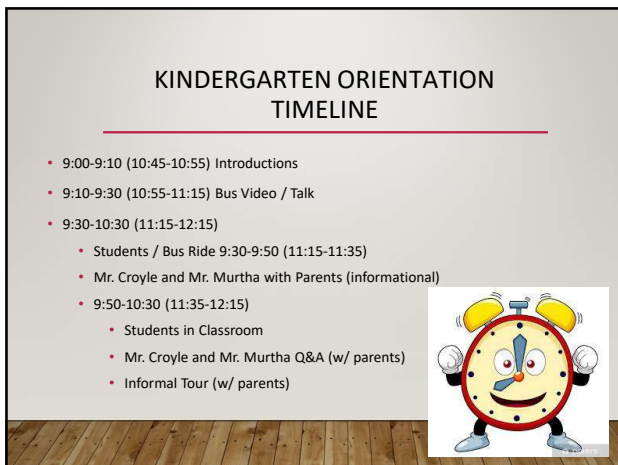




1



2



3

IMPORTANT INFORMATION


- Mill Creek Elementary
 - <https://www.cbsd.org/millicreek>
 - Twitter CBMillCreek
 - 267-893-3600
 - 638 Bellflower Blvd Warrington Pa, 18976

**IMPORTANT
INFORMATION**

4

TODAY'S AGENDA


- Today's Purpose
- A welcome from Mr. Croyle and Mr. Murtha
 - Kindergarten Philosophy
 - Building Theme
 - Curriculum Overview
 - Communication
 - Attendance
 - Parent Portal
 - Volunteering
 - Safety Procedures



5

TODAY'S AGENDA CONTINUED

- Student Emergency Info
- ELD Kindergarten Program
- Technology
- Healthy Food
 - Birthday Treats
- Time
- Creekers' Code Tickets
- Building Design
- Arrival / Pick Up Procedures
- Transportation & Bus Information
 - Placards (AM/PM) / Name Tags (Mode for Arrival and Dismissal)



6

CENTRAL BUCKS KINDERGARTEN PHILOSOPHY

- Mill Creek Elementary Kindergarten Program is fundamentally academic while respecting the developmental stages of children balancing academics and building self-confidence.
- We are committed to emphasizing the love of learning, developing early literacy and mathematical concepts, and strengthening the social and emotional well being of all children.

The Main Three Things

- SAFETY, "Want-to-edness", Academics



7

OUR BUILDING THEME....



8

COMMUNICATION

- Parent Portal
 - E-mail address
 - www.cbsd.org
 - Parent Resource tab
 - Click "Parent Portal Information"
 - <https://www.cbsd.org/Page/26932>
 - Step-by-step directions
- Mill Creek Website <https://www.cbsd.org/millcreek>
- Magic Messages
- Email Blasts



9

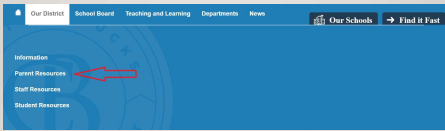
COMMUNICATION

- Classroom Communication
- Kindergarten Back To School Night is 9/16/24 at 6:00PM
- Attendance (absence)
- Volunteer Information
 - <https://www.cbsd.org/Page/355>
 - *mode of transportation (make sure K teacher is aware!)



10

CBSD WEBSITE (WWW.CBSD.ORG)



11

PARENT PORTAL



12

13

ATTENDANCE

[illegible]

VOLUNTEER PAPERWORK

[illegible]

14

SAFETY

- Buzzer System / Camera
- Vestibule area (Drop off materials)
- Inner Office area (Sign In and Sign Out, Questions, Volunteering, etc...)



15

ELD KINDERGARTEN PROGRAM



This program gives our multilingual learners more exposure to the CB curriculum to strengthen their skills in reading, writing, listening, and speaking.

16

TECHNOLOGY / IPAD

- First day of school
- **The device will be left at school**
- The iPad will be utilized but not every day (balance)
- Teachers will be slowly introducing apps, Seesaw and Canvas



17

HEALTHY FOOD



- State Mandate
- Snack
 - Healthy alternatives
- Birthday Celebrations...**Birthday Readers!**
 - Special Jobs



18

SCHOOL TIMEFRAME

- AM Session
 - Arrival 8:15AM-8:35AM
 - Dismissal 11:10AM
- PM Session
 - Arrival 12:40PM
 - Dismissal 3:15-3:35PM
- Before Care / After Care
 - [Community School / Child Care Program \(cbsd.org\)](#)

19

CREEKERS' CODE / MAGIC TICKETS!!!

20

BUILDING DESIGN...

21

WALKERS



22

BUS RIDERS (ONE WAY)



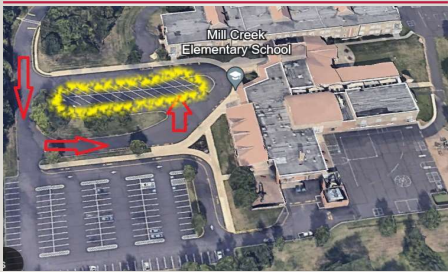
23

AM CAR RIDER DROP OFF
ALL STUDENTS (K-6)



24

AM PICK UP



25

PM DROP OFF



26

PM CAR RIDER PICK UP
ALL STUDENTS K-6



27

FIRST DAY OF SCHOOL...

- Pictures
- Sunglasses
- Walking with your child to the classroom?
 - Sorry!
- Build your child's confidence.



28

WE CAN'T WAIT TO START A NEW YEAR WITH YOU!



29
